



**HOCHSCHULE OSNABRÜCK**  
UNIVERSITY OF APPLIED SCIENCES

WELCOME TO  
OSNABRÜCK UNIVERSITY  
OF APPLIED SCIENCES  
GERMANY





# HOCHSCHULE OSNABRÜCK

UNIVERSITY OF APPLIED SCIENCES

## Germany

- Located in the heart of Europe, 16 federal states, Diverse cities/sceneries, rich culture/history
  - 83 million inhabitants, incl. more than 7 million people of other nationalities
  - Strongest economic region in Europe (1/3 of European GDP)



# Osnabrück: City of Peace



HOCHSCHULE OSNABRÜCK  
UNIVERSITY OF APPLIED SCIENCES

- Federal state: Lower Saxony
- Founded AD 780
- 165,000 inhabitants
- Vivid international community of 140 nations
- 28,000 students at two universities
- Charming historic city center, lovely green countryside

[www.osnabrueck.de/](http://www.osnabrueck.de/)



# Osnabrück: location and distances to major cities (as the crow flies)



HOCHSCHULE OSNABRÜCK  
UNIVERSITY OF APPLIED SCIENCES

- ⇒ 57 km to Lingen, affiliated campus of OS UAS
- ⇒ 70 km to the Dutch border
- ⇒ 103 km to Bremen
- ⇒ 115 km to Hanover
- ⇒ 167 km to Cologne
- ⇒ 193 km to Hamburg
- ⇒ 365 km to Berlin
- ⇒ 525 km to Munich





**HOCHSCHULE OSNABRÜCK**

UNIVERSITY OF APPLIED SCIENCES

## Osnabrück: attractive touristic area

Discover not only the beautiful city of Osnabrück ...



... but also the picturesque, green countryside with medieval villages, castles, lakes ...



[www.osnabrueck.de/](http://www.osnabrueck.de/)

<https://en.wikipedia.org/wiki/Osnabrueck>

<https://historicgermany.travel/historic-germany/osnabrueck/>

# Osnabrück UAS: facts and figures



HOCHSCHULE OSNABRÜCK  
UNIVERSITY OF APPLIED SCIENCES

- Founded in 1971, a foundation since 2003
- Around 14,000 students – ca. 5,000 at the business faculty
- 4 faculties, 1 institute of music
- A large variety of degree programs: undergraduate, postgraduate, dual, part-time, continuing education programs
- 1 international program each on Bachelor and Master level at the business faculty
- Study and research with a strong practical orientation
- Close cooperation with industry and trade



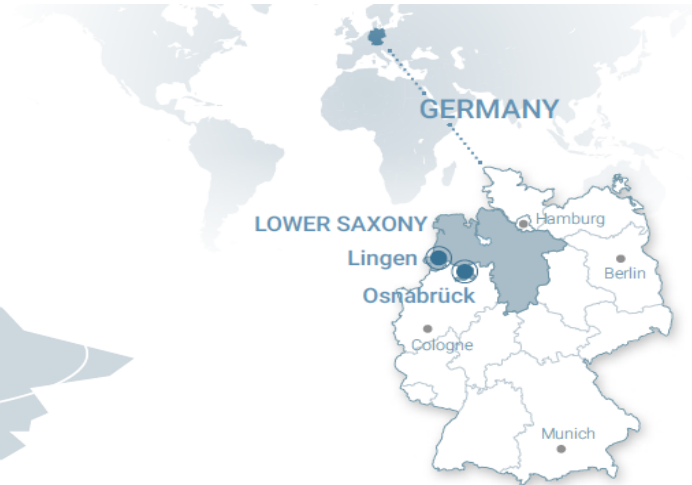
# Osnabrück UAS: campus locations



**HOCHSCHULE OSNABRÜCK**  
UNIVERSITY OF APPLIED SCIENCES

## LINGEN CAMPUS

Faculty of Management, Culture and Technology (MKT)

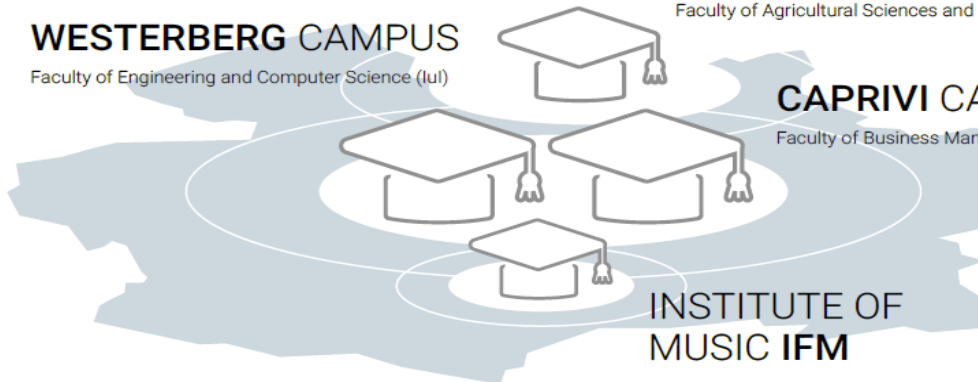


## HASTE CAMPUS

Faculty of Agricultural Sciences and Landscape Architecture (AuL)

## WESTERBERG CAMPUS

Faculty of Engineering and Computer Science (IuI)



## CAPRIVI CAMPUS

Faculty of Business Management and Social Sciences (WiSo)

## INSTITUTE OF MUSIC IFM

NORTH



*The colored background areas show the outlines of the cities Lingen and Osnabrück.*



**3.000 students (winter semester 2021/2022)**

- Computer Science
- Dental Technology
- Design
- Electrical Engineering
- Materials Sciences
- Mechanical Engineering
- Mechatronics
- Process Engineering



**Faculty of Agriculture and Landscape Architecture (AuL)**

**2.700 students (winter semester 2021/2022)**

- Agriculture / Horticulture
- Bioengineering in Agriculture and Food Industry
- Food Technology
- Home Economics and Nutrition Sciences
- Landscape Architecture
- Landscape Engineering
- Open Space Planning



**Faculty of Business Management and Social Sciences (WiSo)**

**440 students (winter semester 2021/2022)**

Music Education:

- Classical Music (vocals, instrumental)
- Elementary Music Education
- Jazz
- Musical
- Pop



**Institute of Music (IfM)**

**5.400 students (winter semester 2021/2022)**

- Business Management and Economics
- Business Law
- Business Psychology
- Health Management / Health Sciences
- Midwifery
- Nursing
- Physical/Occupational Therapy
- Public Management
- Social Work





## LINGEN CAMPUS

Faculty of Management, Culture and Technology (MKT)



### 2.300 students (winter semester 2021/2022)

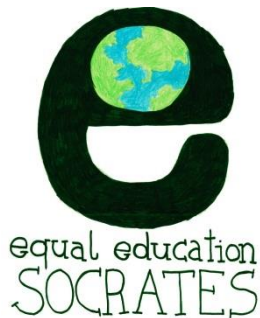
- Business
- Business Informatics
- Industrial Engineering
- Communication Management
- Nursing
- Theater Pedagogy

## **PARNER UNIVERSITIES ALL OVER THE WORLD**

Imparting intercultural skills is a core concern of Osnabrück University of Applied Sciences. For this it is of course essential to weave and maintain an international network. Over the decades, valuable contacts have grown all over the world, which are summarized in this graphic.



- A large group of international visiting and degree-seeking students enriches our campuses every semester (currently 778) , coming from all over the world: Europe, Asia, Africa, Australia, North, Central and South America
- International study programs with English modules
- Multilingual education



E-Quality Label awarded twice by the German Academic Exchange Service (DAAD): **Best university in terms of international mobility**, especially within the ERASMUS student and teaching staff exchange program

As to an International Student Barometer survey, both visiting and degree-seeking students from abroad say about their experiences in Osnabrück:

- 90 % would recommend our university to other international students
- 96.6 % say they get learning support when they need it
- 95 % stated they were satisfied or very satisfied with the overall university support services (international, IT, library, tutors, buddies, housing, etc.)
- 88.6 % indicate they were able to make friends from Germany – this is the best result in Europe and second best result worldwide in this category



For further student testimonials, please go to:

[www.hs-osnabrueck.de/en/wiso/international/incoming/#c304680](http://www.hs-osnabrueck.de/en/wiso/international/incoming/#c304680)

## STATEMENTS OF OUR INTERNATIONAL STUDENTS

### **Matteo Bruni from Italy, International Business and Management (B.A.)**

»I feel that Osnabrück University of Applied Sciences really is MY university thanks to the thousands of possibilities, projects, trips, conferences and opportunities for engagement.

From my point of view, Osnabrück is the perfect student city. It is calm and not too big, with not too expensive apartments and easy access to all locations. At the same time, Osnabrück has many cultural offers, just like a big city.«





Excellent ranking results by renowned national institutions: e. g.  
German Center for University Development (CHE), U-Multirank, online portal StudyCheck:

- **Student rating:** one of the most popular universities in Germany
- **Top-ranked Bachelor and Master programs at business faculty:** e. g. International Business and Management, Business Law, Nursing Science, Social Work – for their syllabi, internationality and employability
- **Library:** one of the five best in Germany, no. 1 in the Lower Saxony, ranked top in a national comparison in three categories: service offers, usability/customer orientation and cost effectiveness/efficiency

# Osnabrück UAS: academic calendar



HOCHSCHULE OSNABRÜCK  
UNIVERSITY OF APPLIED SCIENCES

	Winter semester	Summer semester
International language school German	mid-August to mid-September	February
Start/end of semester	September 1 to February 28/29	March 1 to August 31
Orientation days	2 to 3 days in the week before the classes begin	1 to 3 days in the week before the classes begin
Start/end of classes	mid-September to mid-January	beginning of March until mid-June
Examination period	mid-January to beginning of February	mid-June until the beginning of July
Semester break	February	beginning of July until mid-September

Visiting students may leave once they have taken their last exam.

Calendars of next semesters: [www.hs-osnabrueck.de/wiso-incoming-academic-calendars](http://www.hs-osnabrueck.de/wiso-incoming-academic-calendars)

# Osnabrück UAS: study experience



HOCHSCHULE OSNABRÜCK  
UNIVERSITY OF APPLIED SCIENCES

- Pleasant atmosphere, friendly and helpful teachers, staff and buddies
- Bachelor and Master modules with a high practical orientation, incorporating international, ecological and sustainable issues
- Short-term summer and winter programs, English course catalog, free semester language courses
- Modern infrastructure: top-ranked library, prize-winning canteen, cafeterias, cozy lounges
- Modularised Bachelor and Master programs, small study groups





# Osnabrück: student life



HOCHSCHULE OSNABRÜCK  
UNIVERSITY OF APPLIED SCIENCES

Enjoy a timeout from studying:

- Lively social scene due to plenty of bars, clubs, restaurants, cinemas, theatres ...
- Large variety of indoor and outdoor activities
- Festival week in May with open air music events for free
- Historical Christmas market in December
- European media art festival
- Plus many more enjoyable cultural events



# Osnabrück UAS: services for international students



HOCHSCHULE OSNABRÜCK  
UNIVERSITY OF APPLIED SCIENCES

- Student advisory services:
  - Center for International Mobility (CIM)
  - Center for International Students (CIS)
  - International Faculty Offices (IFO)
  - Learning Center with Career Services
  - Further student associations, advice centers and service institutions – always ready to help
- Housing service
- Buddy program
- Orientation days
- Social events



## ONE-WEEK BLOCK SEMINARS – MAY & OCTOBER

### Characteristics:

- Winter semester: October, summer semester: May
- No regular lectures during this week
- Objectives:
  - Give students the opportunity to put knowledge into practice
  - Allow students to broaden their horizon
- Various formats (examples):
  - study trips
  - strategic games
  - projects
- International:
  - About 5 to 10 guest lecturers of partner universities give lectures at the Faculty of Business Management and Social Sciences.

e.g. „The United States of America Two Years after Obama: Healthcare and Foreign Policy“

e.g. „Governance, Accountability and Ethics“

e.g. “The Holy Cow calls you now to India!?”



# Approximate monthly cost of living



Ca. 800 to 950 euros are needed to cover all monthly expenses:

Rental for accommodation	200 to 400 euros
One-time housing deposit	400 euros, will be returned at end of stay if room is left in good condition
First equipment (bedding, towels, dishes)	150 euros
Broadcasting fee for radio/TV	18 euros
Meals	70 euros in university canteens plus 100 euros at home
Leisure time	70 euros
One-time fee for every semester (public transportation ticket, student services), administrative fee waived for exchange students from partner universities	ca. 330 euros: <a href="https://www.hs-osnabrueck.de/visiting-students-semester-fees">https://www.hs-osnabrueck.de/visiting-students-semester-fees</a>
Study material	50 euros
Health insurance (non-EU students)	110 euros
Residence permit (non-EU students)	110 euros plus 80 euros for extension

Depending on personal needs and habits, further costs should be figured in.

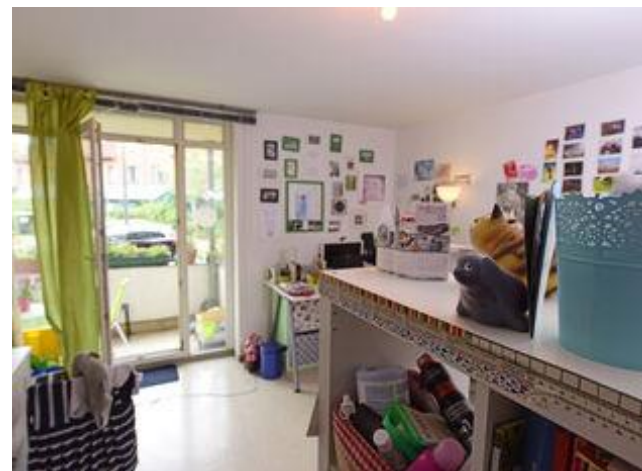




## STUDENT DORMITORIES – INTERNATIONAL STUDENTS

1. Various dormitories, which are located in different areas of the cities of Osnabrück and Lingen.
2. Usually 3 – 6 furnished, single rooms in apartments or houses, which are equipped with:
  - Wardrobe
  - Desk
  - Bed
  - Chair
  - Table
  - Lamp (on the ceiling)
3. Almost all dormitories are equipped with:
  - Internet access
  - Satellite-/cable-TV
  - Washing machine, dryer
4. Kitchen, bathroom, washing machine and dryer are shared and used commonly by all residents of an apartment or house.

# STUDENT DORMITORIES – SOME IMPRESSIONS



# Website and contacts



HOCHSCHULE OSNABRÜCK  
UNIVERSITY OF APPLIED SCIENCES

Faculty of Business Management and Social Sciences

Website for incoming students: [www.hs-osnabrueck.de/wiso-incoming-en](http://www.hs-osnabrueck.de/wiso-incoming-en)

International Faculty Office – Incoming Student Advisors:

Michaela Buchholz (Europe)

[m.buchholz@hs-osnabrueck.de](mailto:m.buchholz@hs-osnabrueck.de)

Nathalie Banehr + Olga Tautfest (Non-European Countries)

[incoming-overseas-wiso@hs-osnabrueck.de](mailto:incoming-overseas-wiso@hs-osnabrueck.de)

**Come and join us – you are warmly welcome!**

